

KAITORO - MIDDLE TEAM

YEARS 2 - 4

PARENT INFORMATION

2022



MIDDLE TEAM ORGANISATION

Kānuka - Room 5 - Years 2/3 - Miss Hayley Miller

Kōwhai - Room 6 - Years 2/3 - Mrs Belinda Duff

Kawakawa - Room 7 - Year 3/4 - Mr Garth Powell (Middle Team Dean)

Tōtara - Room 8 - Year 3/4 - Mrs Sarah O'Neill, Harrison Jolly

UCOE 3rd Year student

Lyn Donaldson – Release Teacher for Kawakawa (Room 7)

Catherine McRae - Release teacher for Kawakawa (Room 7)

Bronwyn Holgate - Release Teacher for Tōtara (Room 8)

Kerry Bristow, Amy Moir, Tracy Ruddenklau and Susan Irvine – Teacher Assistants

UNIFORM EXPECTATIONS

We see the wearing of our uniform as a mark of high standards, and we are proud of our school, and its reputation. The uniform is in our school colours, being jade and navy blue, and includes our school logo on all items. There are various choices available which consist of the following:

GIRLS

- Jade Polo Shirt
- Navy Polypro (colder weather)

- Navy Culottes
- Navy Skort
- Navy Tracksuit Pants

- Navy Polar Fleece
- Navy Merino Jersey

- Navy Tracksuit Jacket (*optional*)

- Navy Bucket Hat (*compulsory Terms 1 & 4*)

BOYS

- Jade Polo Shirt
- Navy Polypro (colder weather)

- Navy Shorts
- Navy Tracksuit Pants

- Navy Polar Fleece
- Navy Merino Jersey

- Navy Tracksuit Jacket (*optional*)

- Navy Bucket Hat (*compulsory Terms 1 & 4*)

FOOTWEAR

- Practical Shoes / Gym Shoes
- White or Navy Socks, Navy Tights (Girls)

SPORTS UNIFORM (UNISEX)

- P.E. Top
- Navy Sports Shorts
- Navy Tracksuit – Jacket & Pants (*optional*)

UNIFORM EXPECTATIONS

More information about our uniform can be found on the school website.

Click on the following link:

[EAST TAIERI SCHOOL UNIFORM](#)

TRANSITION TO THE MIDDLE SCHOOL

- * Increased independence
 - * Coming into class on their own
 - * Unpacking bags and organising equipment required for the school day
- * Taking more responsibility for their learning
- * The older children being role models and buddies for the younger children

THE CURRICULUM

Essential Learning Areas

- Mathematics
- English
- The Arts
- Science
- Technology
- Digital Technology
- Physical Education
- Health
- Social Sciences
- Māori

Literacy and Mathematics are integrated into everything we do.

READING

- School Programmes - Fab4, High5 (Guided Reading)
- Home Reading
- School Library
- Reading Log
- Choosing Independently



THE NEW ZEALAND MATHEMATICS CURRICULUM

Geometry and Measurement

- Shape
- Position and Orientation
- Transformation
- Length
- Area
- Volume and Capacity
- Mass
- Angle
- Temperature
- Time

Number

- Number Strategy
 - Addition/Subtraction
 - Multiplication/Division
 - Proportions/Ratios
- Number Knowledge

Statistics

- Investigations
- Graphs
- Probability

MATHEMATICS

- * Inquiry Maths through a Balanced Mathematics Programme
- * Kiwiana group
- * Maths information booklet - on the school website
- * Basic facts and problem solving focus
- * Pathways and workshops

STRATEGY AND KNOWLEDGE

- **Strategy:** How the children solve a problem

Example: If there were 13 geese in a pond, and 14 more geese flew in. How many geese are there altogether?

Answer: Use doubles: $13 + 13 = 26 + 1 = 27$

- **Knowledge:** The understanding of number that children require when using a strategy

Doubles to 20; basic addition/subtraction facts to 20; counting forwards and backwards to 100 or 1000 etc

MATHEMATICS AT HOME

- Practising basic facts
- Practising times tables and division
- Reading and solving word problems
- Discussing the strategies used when solving problems
- Counting forwards and backwards to/from 20, 50, 100, 1000 etc
- Cutting items into fractions e.g. apples in quarters
- Telling the time – both digital and analogue
- Looking at prices when at the supermarket
- Making patterns
- XtraMath, Times Table.com and Studyladder

Homework

* Expectations

- * If for any reason you are having issues with the homework, please contact your child's teacher to discuss. We are very supportive and understanding.
- * Homework will not come home if it is a short week, or the end of term.

* Content

- * **Spelling** - list of words to learn
- * **Reading** - each night with reading log filled out
- * **Maths** - times tables activities for the term
- * **Recorder** - practise what has been learned in music lessons

INQUIRY AND RESEARCH

At East Taieri School we encourage our learners to be inquisitive. Our Inquiry programme allows for children to develop skills and knowledge within a specific framework. Within this framework, children are able to develop learner agency and follow their passions and interests.

Research Questions:

1. What makes a good research question?
2. How do I find and use information to answer my question?

Research Questions:



QUESTIONING

- I can form a research question about a topic



FIND

- I can use a reference book to locate specific information



INTERPRET

- I can read and locate key words and ideas from the information I have gathered



ANSWER

- I can begin to attempt to put the information into my own words to answer a question

OUR INQUIRY MODEL...

TREES

- **TUNING IN** – What information do I already know about the topic? What do I want to find out? Define – Ask a BIG question.
- **RESEARCH** – Locate – Identify resources that will help answer the BIG question. Find and sort out information to help answer the BIG question.
- **EXTEND** – Select and Organise – Organise the information that will answer the BIG question. How will it be presented. Can I take my information further?
- **EVALUATE** – Assess – Has the BIG question been answered? Could I have done it differently?
- **SO WHAT?** – Present – Decide the best way to present the information. How will I use this information in the future?

2022 INQUIRY TOPICS

T1 - Health and Wellbeing

T2 - Design and Technologies

T3 - Creative Expression

T4 - Passion Projects

Watch weekly notes and the school newsletter for events relating to these things.

OUR SCHOOL VISION



*At East Taieri
School we
Empower, Inspire
and Care as we
Learn and Grow
Together*

VALUES PROGRAMME



Our values are:

- Kindness
- Respect
- Responsibility
- Resilience
- Personal Best

LEARNER QUALITIES & VALUES

- * At East Taieri School our programmes reflect our Learner Qualities and our Values programme
- * We have a focus value for a 2 week period of time.
- * Children are recognised for consistently demonstrating these values and learner qualities at assemblies.

LEARNER QUALITIES



DISCOVERY TIME

Discovery Time provides opportunities to help scaffold and extend students' learning through a variety of different learning experiences, ranging from science and technology, to building and the arts.

The children develop skills in:

- * Cooperative learning
- * Leadership across a range of ages
- * Questioning and social conversations
- * Relating to others

DISCOVERY TIME

Discovery Time begins in Term 2 and runs through to the end of Term 3

This is for all of the Middle and Senior classes.

We encourage parents and grandparents to either help lead or support their children with activities / workshops

For more information please contact: Sarah O'Neill

sarah@east-taieri.school.nz

SCHOOL PROGRAMMES

- Specialist Teachers – Alison Tay (music), Jolene Casey (P.E)
- Swimming- Jill Clarke
- Library - Each class attends the library for 1 session a week. Check with your class teacher when this is
- Team Singing - Friday morning
- Team Sport - Monday afternoon
- Mahi Tahī - Wednesday afternoon
- Manu Rere (Junior/Middle Kapa Haka) - TBC

SCHOOL SUPPORT PROGRAMMES AND AGENCIES

- Learning Support Coordinator - Denise Hannagan
- Teacher Aide Support within the classroom
- Kiwiana - Gifted and Talented programme
- Resource Teacher of Learning and Behaviour (RTLB)
- Group Special Education (GSE)
- Speech Language Therapy (SLT)
- Public Health Nurse
- Vision and Hearing
- Various outside agencies (e.g. Police Educator, Life Education...)

COLLABORATIVE TEACHING

As a reflective staff who aspire to continually improve and enhance our teaching practice we are all involved in collaborative teaching. This enables students to benefit from the strengths of more than just their home room teacher and interact with a wider range of students.

MONITORING PROGRESS

- * **Standardised Testing**

- * **Assessment**

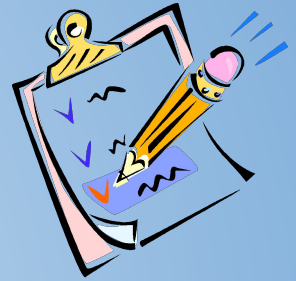
- Beginning of year assessment

- * **Reporting to Parents**

- Mid Year Report & Interviews
 - End of Year Reports

- * **Australasian Assessments**

- See Lyn Donaldson or Catherine McRae
about these



HIGHLIGHTS



Swimming
Discovery Time
Tirohanga Day
Trips



Year 4 museum sleepover
Speakers



Whānau Awards
Gymnastics
PolyFest
Art Exhibition
Manu Rere
Mahi Tahī
Many Others!!



YEAR 4 MUSEUM SLEEPOVER

- A highlight for the Year 4 children is our annual Year 4 Museum Sleepover.
- This is an introductory camp for the children. We spend the evening at the Otago Museum doing a range of activities. The next day we head to the Edgar centre for sports and then finish off with Subway for lunch and a swim and hydroslide at Moana Pool.
- More information about this will be sent home early next term.

EXPECTATIONS

→ Sun hats

- ◆ Must be wide brimmed and worn whenever outside during Terms 1 and 4

→ Masks

- ◆ Children in Years 4-6 are required to wear masks while working indoors. These are removed while they are eating. When outside the children do not need to wear masks. We ensure there are plenty of mask breaks.

→ Clothing and Belongings Named

- ◆ Please name all clothing very clearly
- ◆ Lost items are placed in the lost property bin in the office foyer
- ◆ Vivid is not an effective method as the ink smudges

→ Toys

- ◆ We encourage the children not to bring toys to school, but if they do they are the responsibility of the child

EXPECTATIONS

→ Snack Attack

- ◆ We have a healthy quick snack at 10am
- ◆ Suggested food: fruit, vegetables or nuts

→ Notes for Phys Ed

- ◆ If your child is unable to participate in physical activities, you must send a note to school

→ Notify Absences and if a bus person

- ◆ It is important that you contact the office if your child is going to be late for school or away for the day. If your child is a bus pupil, you must let Annette know if they are on it or not

EXPECTATIONS

→ Road Safety

◆ If your child is on the bus, walking, scootering or biking to school, they are required to wear a high viz vest. These can be purchased at the 2 Dollar Shop. Please use the crossings at the designated sites. Please do not park in the entrance to the church - this is a no parking zone. These are clearly marked by cones.

→ Appointments

◆ If you have any issues regarding your child, please make an appointment with the class teacher in the first instance. If you require further support, contact the Middle Dean. If necessary, the Principal will then become involved.

EXPECTATIONS

→ Smart Watches

◆ If children need to wear their Smart Watch to school these MUST be set to 'School Mode'. If children are found texting or calling on these the watch will be kept in the teacher's desk until 3pm.

→ Collecting children from school for appointments

◆ If you need to collect your child from school during the day for an appointment, you must let the class teacher know. Your child will wait for you in the school office and you must sign your child out using the Viz-Tab system.

Drop off Zones

Due to the large volume of traffic we encourage students to walk or wheel to school or utilise our drop off zones from which children can safely walk to school. See the map to locate your nearest drop off zone.



CONTACT

If you have any further questions or concerns, please contact your child's teacher.

Garth Powell - garth@east-taieri.school.nz

Sarah O'Neill - sarah@east-taieri.school.nz

Hayley Miller - hayleymiller@east-taieri.school.nz

Belinda Duff - belinda@east-taieri.school.nz

Bronwyn Holgate - bronwyn@east-taieri.school.nz

Lyn Donaldson - lyn@east-taieri.school.nz

Catherine McRae - catherine@east-taieri.school.nz

Jennifer Horgan (Principal) - jennifer@east-taieri.school.nz